



# Major Transportation Corridors Plan

---

2016 UPDATE

# Major Transportation Corridors Plan (MTCP) 2016 Update

---

The Major Transportation Corridor Plan is a critical step in creating effective and efficient transportation infrastructure that is ready to meet future needs. The Plan will provide:

An updated vision for future transportation,

A prioritized list of transportation improvements,

A funding plan for ensuring adequate resources to build the future transportation system,

A look at multimodal transportation needs, and

A long-term right-of-way preservation plan for each roadway corridor.

# We want to hear from you!

## Visit us at [www.epcroadplan.com](http://www.epcroadplan.com)

---

You will help inform planners about how you travel, where you travel and what is important to you.

There are a number of ways for you to make your voice heard and to stay informed:

Visit the website at [www.epcroadplan.com](http://www.epcroadplan.com)

Sign-up for project updates and/or submit a comment or question

Take the online survey on the website to tell us your thoughts on the transportation system

Contact the project manager at [VictoriaChavez@elpasoco.com](mailto:VictoriaChavez@elpasoco.com)

Attend a Highway Advisory Committee meeting on the third Wednesday of the month at 9 AM at Pikes Peak Regional Building 2880 International Circle – Hearing Room

Like us on Facebook



# Land Use Results – Comments Incorporated

---

The PPACG 2040 forecast had shown some County TAZs losing population over the coming decades. In many cases, this appeared to be due to automatic rebalancing of totals

Staff identified some areas where new assumptions and conditions would drive revisions to the 2040 forecasts for households and employment

Air Force personnel indicated that the PPACG estimate for Schriever AFB's employment (which anticipated a reduction from 2010 to 2040), was not accurate anymore,

Input from the public highlighted some areas that were built out and additions were not possible.

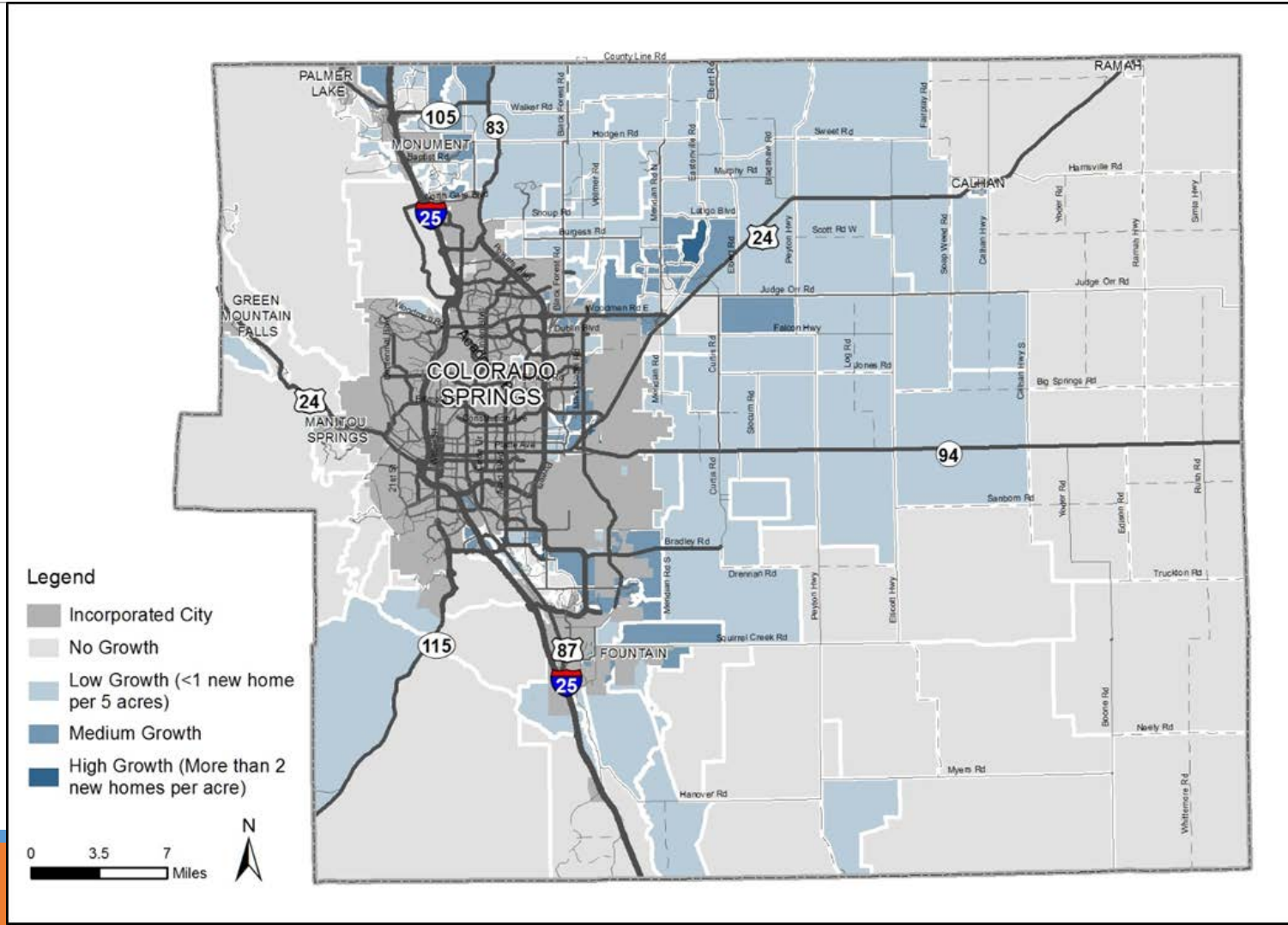
Input from the public and municipalities about where new development is planned or occurring.

Following these revisions, the household and employment totals throughout the county were adjusted to maintain the PPACG control totals.

# Growth Rate – Households

	2010	2030	2040	2060		Growth 2010-2040	Annual Growth Rate 2010-2040
Households - City	184,302	227,750	249,469	288,288		65,167	1.01%
Households – Unincorporated County	54,552	97,508	114,256	150,407		59,704	2.49%
Households - Total	238,854	325,258	363,725	438,695		124,871	1.41%

# Where Household Growth is Expected

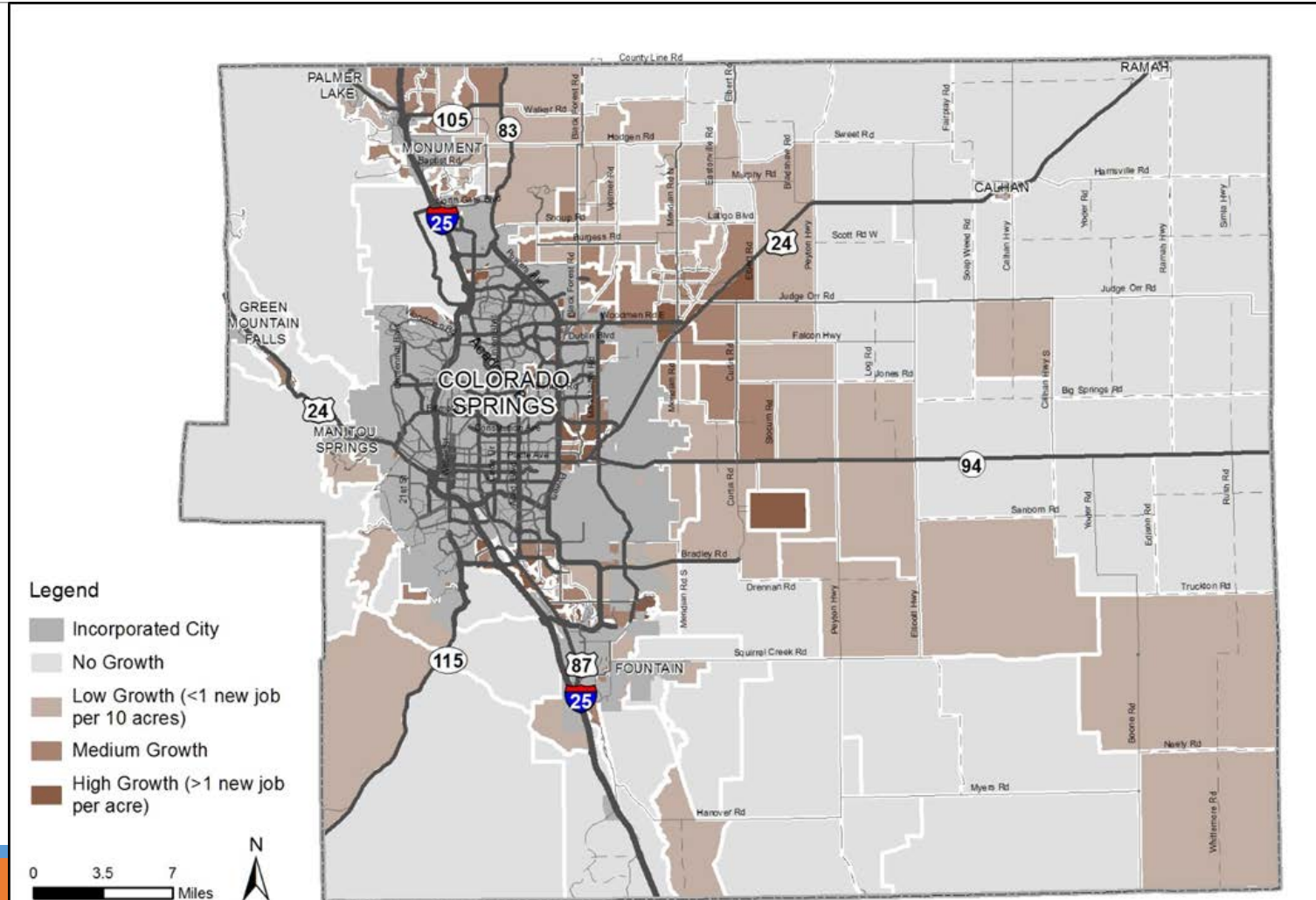


# Growth Rate – Employment

---

<b>Table 1-3: Employment Growth Summary</b>						
	2010	2030	2040	2060	Growth 2010- 2040	Annual Growth Rate 2010-2040
<b>Employment - City</b>	237,069	333,298	381,394	473,532	144,325	1.60%
<b>Employment – Unincorporated County</b>	46,709	86,346	102,241	130,200	55,532	2.65%
<b>Employment - Total</b>	283,778	419,644	483,635	603,732	199,857	1.79%

# Where Employment Growth is Expected





# Traffic Counts

County roads with higher traffic.

Street Name	Location	Existing A	Functional Cl	Surface Ty
I-25	South of Northgate	81000	Freeway	Paved
Powers Blvd N	South of Constitution	66000	Expressway	Paved
Academy Blvd S	East of 25	49350	Principal	Paved
I-25	South of S. Academy	48000	Freeway	Paved
Academy Blvd S	west of I-25	44750	Principal	Paved
US Hwy 24	West of 31st Avenue	40450	Principal	Paved
US Hwy 24	East of Powers Blvd.	39400	Principal	Paved
State Hwy 115	South of Academy	31750	Expressway	Paved
I-25	North of Pueblo	30000	Freeway	Paved
State Hwy 94	East of US 24	27000	Principal	Paved
US Hwy 24	West of Manitou	26000	Principal	Paved
Woodmen Road	West of Meridian	24362	Principal	Paved
Woodmen Road	East of Marksheffel	22000	Principal	Paved
Meridian Rd N	South of Judge Orr	21969	Minor Arterial	Paved
US Hwy 24	At Teller County Line	21000	Principal	Paved
Powers Blvd S	South of Milton	20200	Expressway	Paved
State Hwy 16	West of US 85	20000	Principal	Paved
Meridian Rd N	South of Stapleton	19616	Minor Arterial	Paved
Hwy 105	East of Knollwood	18185	Principal	Paved
Marksheffel Rd N	North of Carefree Cir.	17650	Principal	Paved
State Hwy 83	North of Shoup Road	16000	Principal	Paved
Bradley Rd	West of Hancock	15983	Principal	Paved
Baptist Rd	East of 25	15000	Minor Arterial	Paved
Powers Blvd S	South of Bradley	15000	Expressway	Paved
US Hwy 24	US 24 West of	13000	Principal	Paved
Grinnell Blvd	South of Bradley	12047	Minor Arterial	Paved
Galley Rd E	East of Powers Blvd.	12000	Minor Arterial	Paved
Grinnell Blvd	North of Fontaine	11000	Minor Arterial	Paved
Marksheffel Rd N	South of Dublin	11000	Principal	Paved
Peterson Rd	South of Constitution	10819	Minor Arterial	Paved

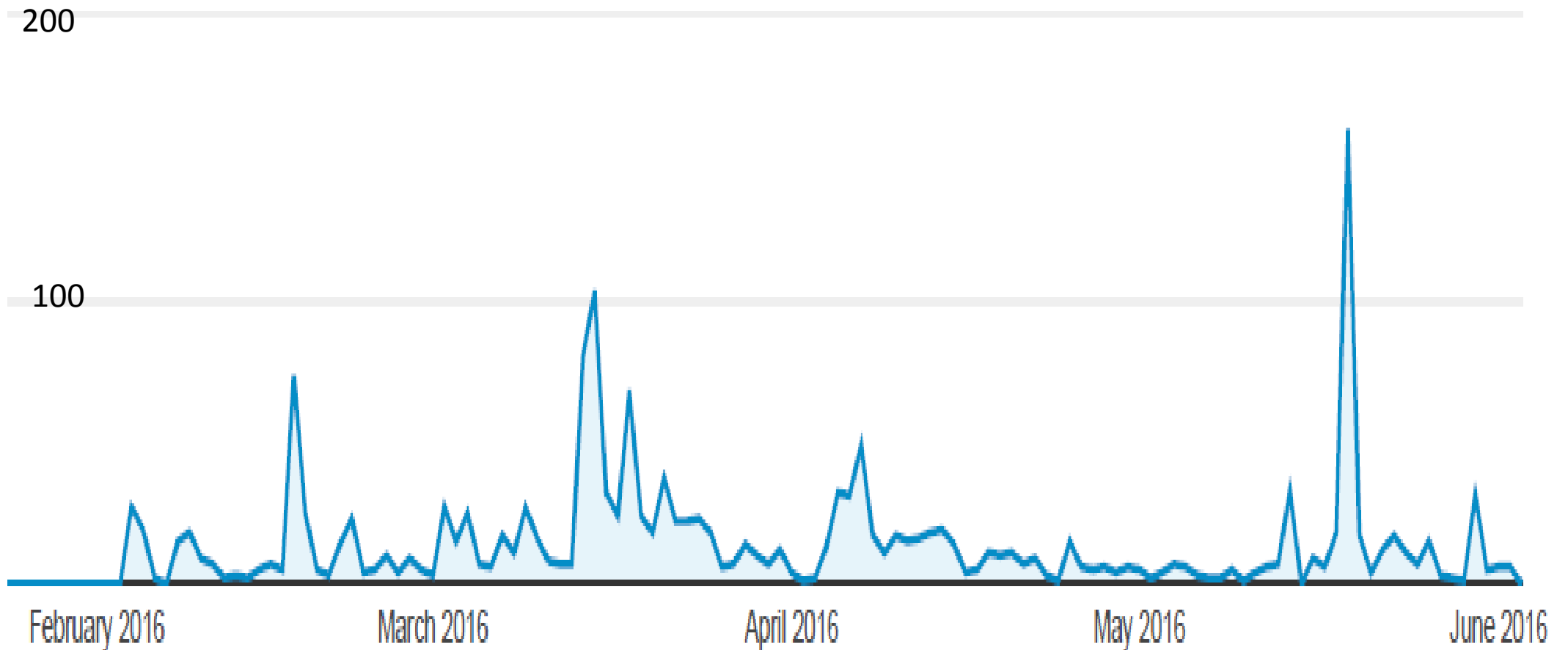
# Traffic Counts

County roads with less traffic.

<b>Squirrel Creek Rd</b>	<b>West of Peyton Hwy.</b>	<b>470</b>	<b>Collector</b>	<b>Paved</b>
<b>Elbert Rd</b>	<b>South of US 24</b>	<b>460</b>	<b>Collector</b>	<b>Paved</b>
<b>Peyton Hwy</b>	<b>North of SH 94</b>	<b>460</b>	<b>Collector</b>	<b>Paved</b>
<b>Black Forest Rd</b>	<b>North of Walker</b>	<b>380</b>	<b>Minor Arterial</b>	<b>Dirt/Grave</b>
<b>Peyton Hwy</b>	<b>South of Squirrel</b>	<b>380</b>	<b>Collector</b>	<b>Paved</b>
<b>Harrisville Rd</b>	<b>East of US 24</b>	<b>343</b>	<b>Collector</b>	<b>Paved</b>
<b>Blaney Rd S</b>	<b>East of Meridian</b>	<b>323</b>	<b>Collector</b>	<b>Dirt/Grave</b>
<b>Sweet Rd</b>	<b>West of Peyton Hwy.</b>	<b>302</b>	<b>Collector</b>	<b>Paved</b>
<b>Peyton Hwy</b>	<b>South of Judge Orr</b>	<b>280</b>	<b>Collector</b>	<b>Paved</b>
<b>Hanover Rd</b>		<b>250</b>	<b>Collector</b>	<b>Paved</b>
<b>Peyton Hwy</b>	<b>South of Drennan</b>	<b>240</b>	<b>Collector</b>	<b>Paved</b>
<b>Judge Orr Rd</b>	<b>East of N. Ramah</b>	<b>190</b>	<b>Collector</b>	<b>Paved</b>
<b>Meridian Rd N</b>	<b>South of Walker</b>	<b>190</b>	<b>Collector</b>	<b>Paved</b>
<b>Myers Rd</b>	<b>East of Peyton Hwy.</b>	<b>169</b>	<b>Collector</b>	<b>Paved</b>
<b>Jones Rd</b>	<b>West of Peyton Hwy.</b>	<b>159</b>	<b>Collector</b>	<b>Paved</b>
<b>Boone Rd</b>	<b>North of Pueblo</b>	<b>150</b>	<b>Collector</b>	<b>Paved</b>
<b>Peyton Hwy</b>	<b>South of Douglas</b>	<b>141</b>	<b>Collector</b>	<b>Dirt/Grave</b>
<b>Soap Weed Rd</b>	<b>North of Judge Orr</b>	<b>139</b>	<b>Collector</b>	<b>Paved</b>
<b>Sweet Rd</b>	<b>West of Soap Weed</b>	<b>130</b>	<b>Collector</b>	<b>Paved</b>
<b>Drennan Rd</b>	<b>West of Peyton Hwy.</b>	<b>98</b>	<b>Collector</b>	<b>Dirt/Grave</b>
<b>Latigo Blvd</b>	<b>West of Meridian</b>	<b>80</b>	<b>Collector</b>	<b>Dirt/Grave</b>
<b>Big Springs Rd</b>	<b>East of Calhan Hwy.</b>	<b>70</b>	<b>Collector</b>	<b>Dirt/Grave</b>
<b>Walker Rd</b>	<b>West of Meridian</b>	<b>60</b>	<b>Collector</b>	<b>Dirt/Grave</b>

# Website Statistics: 1310 Users

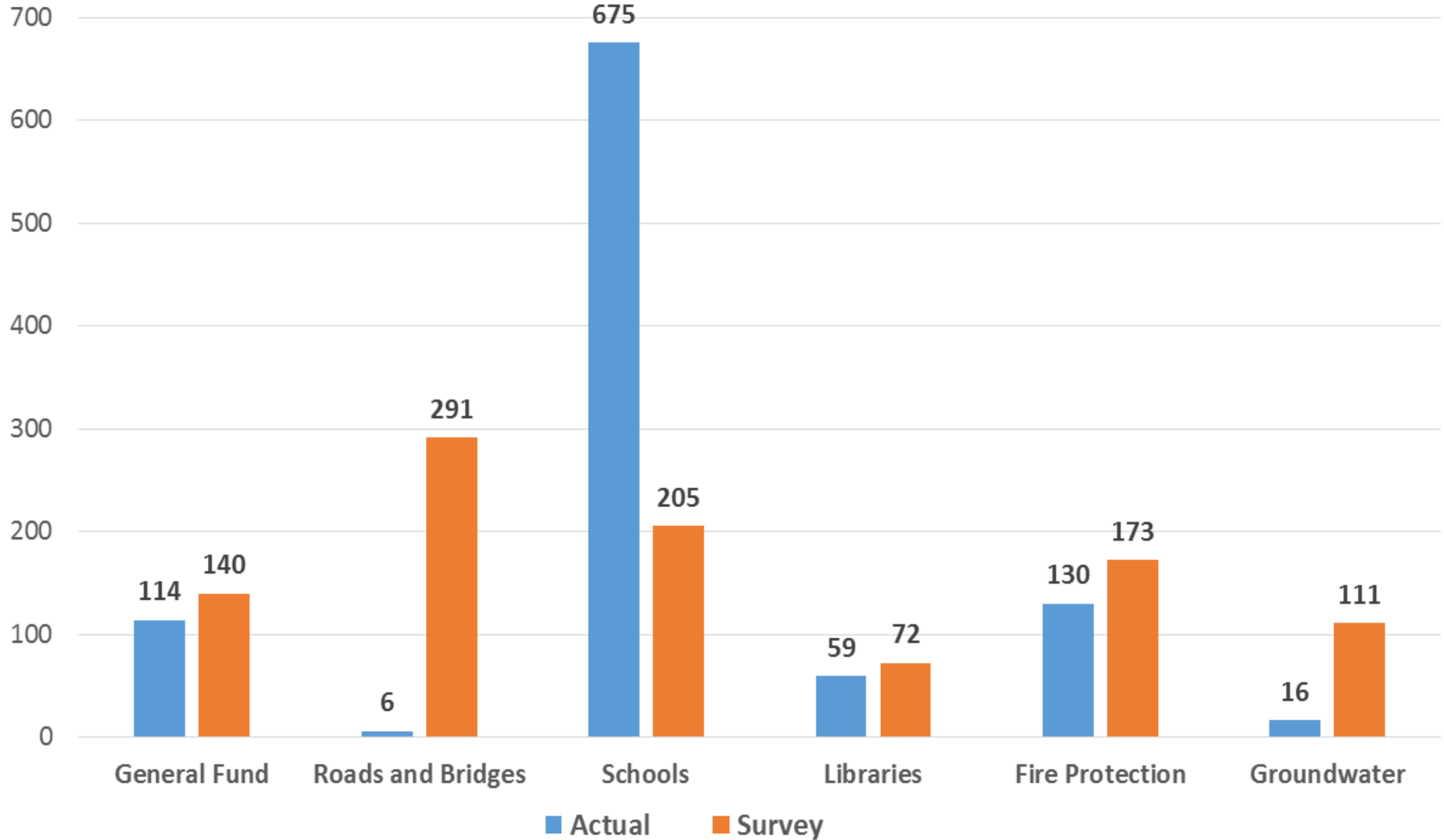
---



What We've Heard about Taxes:

Spend 4750% more on Roads

Survey: Public Allocation of Tax Dollars



# Comments on Improvements

Many people commented on City and State Roads.

Widen roads

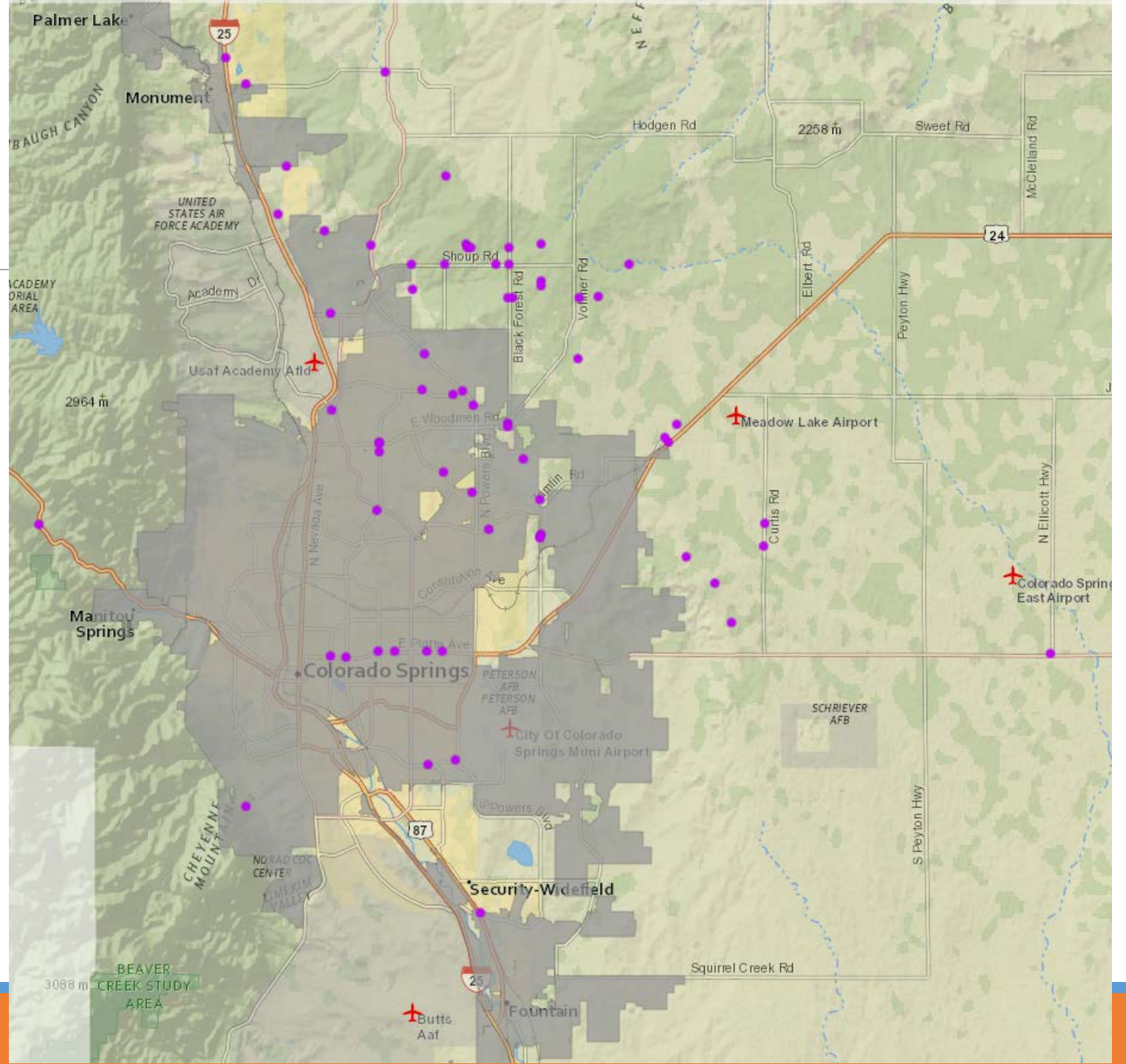
Pave roads and fix potholes

Add bike lanes and sidewalk

Drainage

New connections

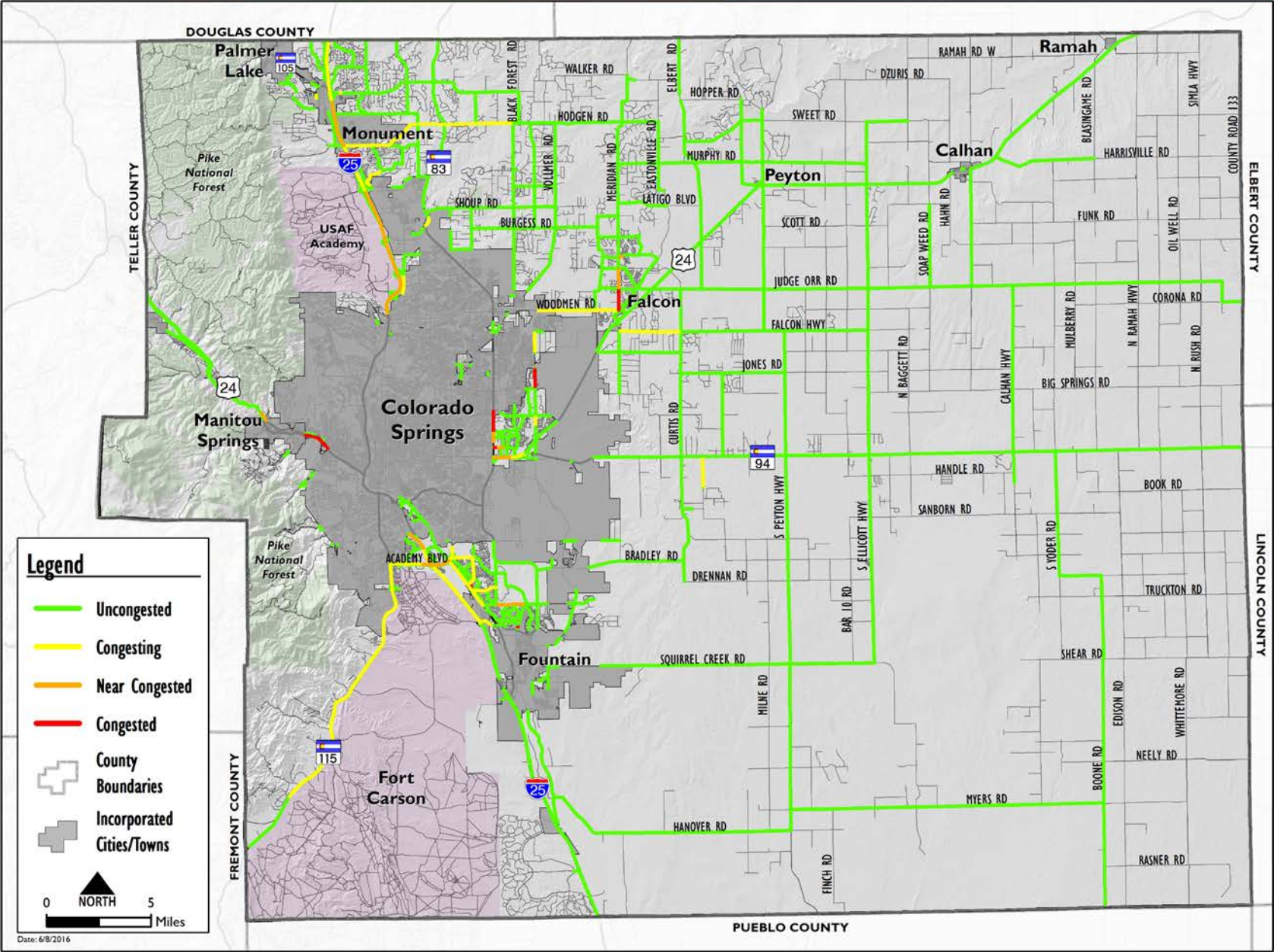
Don't improve roads





# Existing Roadway Operations

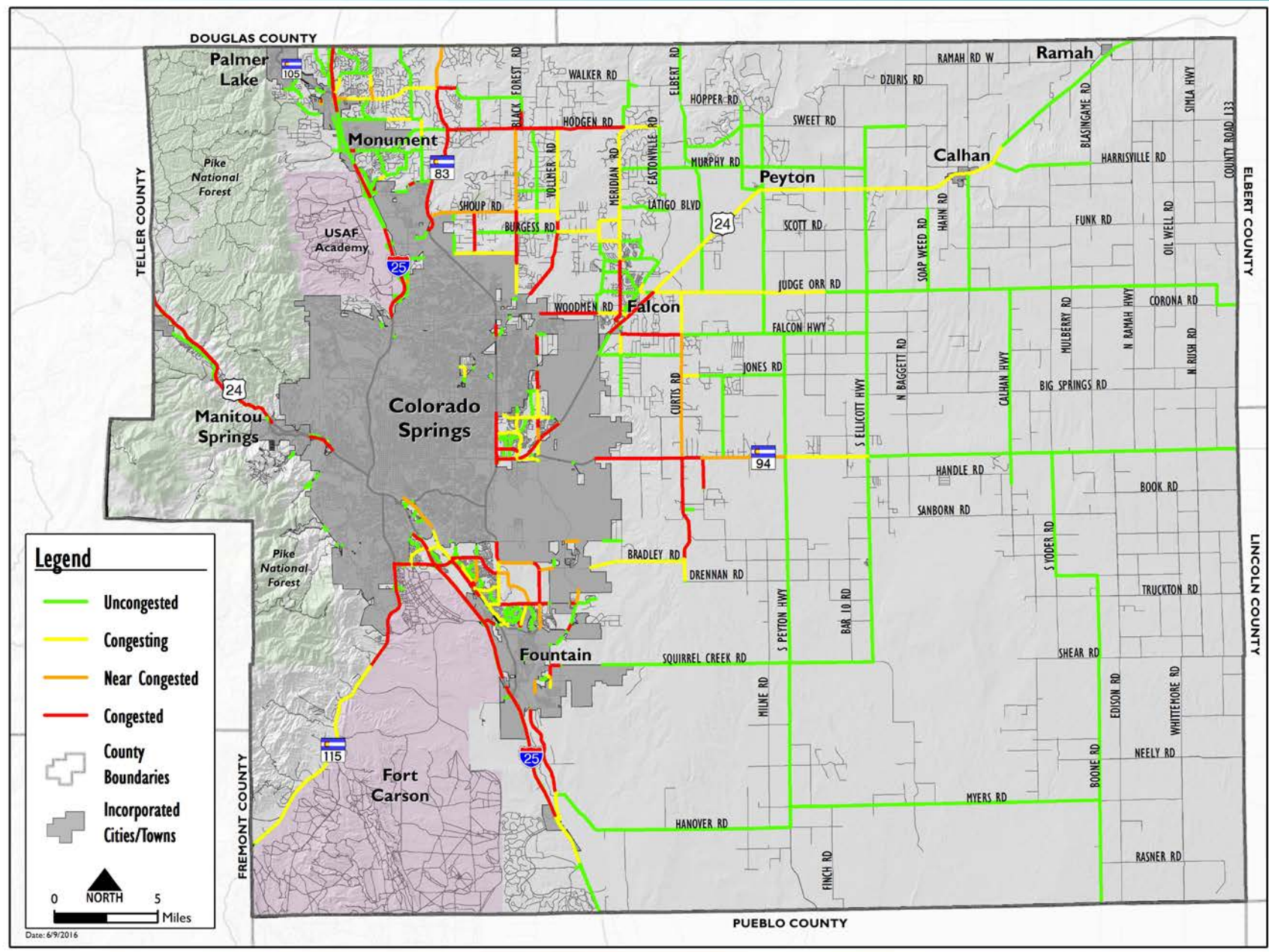
Comments?





# Year 2040 Roadway Operations

Comments?



# Next Steps

---

Finalize land use data – DONE

Run the model to get a draft plan – DONE

Obtain input on draft plan

Revise the plan

Write Reports

Highway Advisory Commission

Planning Commission

Board of County Commissioners

